



MALAYSIAN NOTICES TO MARINERS

**Monthly Edition 7 of 2014
31 JULY 2014**

CONTENTS

- I - Explanatory Notes / Index of Charts Affected.
- II - Notices to Mariners and Corrections to Charts.
- III - Marine Safety Information.
- IV - Corrections to Malaysian List of Lights.

Mariners are requested to inform The Hydrographer, National Hydrographic Centre, Bandar Armada Putra, Pulau Indah, 42009 PORT KLANG, Selangor Darul Ehsan, Malaysia. (Tel: +603 3169 4400), (Fax: +603 3101 3111), E-mail: nhc@hydro.gov.my immediately of the discovery of new dangers, changes or defects in aids to navigation and shortcoming in Malaysian charts or publications.

*DATO' PAHLAWAN ZAAIM BIN HASAN
Rear Admiral
The Hydrographer*

SECTION I

EXPLANATORY NOTES

Charts

The notices in Section II give instructions for the correction of Malaysian Chart (MAL) while notices in Section III give information on marine safety information. Geographical positions refer to the largest scale chart unless otherwise stated. Bearing are true reckoned clockwise from 000 to 359, those relating to lights are from seaward.

Notices to Mariners correcting MAL charts are issued by the National Hydrographic Centre, Royal Malaysian Navy and should be inserted on the charts affected in waterproof violet ink in case of permanent notices and in pencil in case of temporary notices.

Temporary and Preliminary Notices

These are indicated by (T) or (P) after the notice number.

Original Information

An asterisk (*) adjacent to the number of a notice indicates that the notice is based on original information.

Malaysian Notice (MN)

Mariners are to take note the legend MN indicates Malaysian Notice.

INDEX OF CHARTS AFFECTED			
MAL 5	101/2014, 102/2014, 108/2014(T)	MAL 65	101/2014, 103/2014
MAL 515	103/2014	MAL 655	102/2014
MAL 5410	104/2014	MAL 68	102/2014
MAL 5425	104/2014	MAL 740	109/2014(T)
MAL 5529	105/2014, 108/2014(T)	MAL 741	109/2014(T)
MAL 553	108/2014(T)	MAL 750	109/2014(T)
MAL 554	104/2014, 108/2014(T)	MAL 754	109/2014(T)
MAL 565	108/2014(T)	MAL 781	106/2014
MAL 58	108/2014(T)	MAL 864	110/2014(T)
MAL 6	106/2014, 109/2014(T), 110/2014(T)	MAL 865	110/2014(T)
MAL 6134	107/2014	MAL 872	110/2014(T)
MAL 645	101/2014		

SECTION II

101/2014* Malaysia - Terengganu - Dungun - Platform.

Source: Lundin Malaysia B.V. dated 16 Jun 2014.

Chart MAL 5 (Last Correction 88/2014) WGS 84 DATUM

Insert  04° 17'.87N, 104° 53'.53E

Chart MAL 645 (Last Correction 50/2013) WGS 84 DATUM

Insert  04° 17'.87N, 104° 53'.53E

Chart MAL 65 (Last Correction 64/2014) WGS 84 DATUM

Insert  04° 17'.87N, 104° 53'.53E

102/2014 Malaysia - Terengganu - Kertih - Platform.

Source: Marine Department Malaysia No. 53/2014.

Chart MAL 5 (Last Correction 101/2014) WGS 84 DATUM

Insert  05° 31'.88N, 104° 59'.29E

Chart MAL 655 (Last Correction 88/2014) WGS 84 DATUM

Insert  05° 31'.88N, 104° 59'.29E

Chart MAL 68 (Last Correction 88/2014) WGS 84 DATUM

Insert  05° 31'.88N, 104° 59'.29E

103/2014 Malaysia - Johor - Beting Ramunia - Light Beacon.

Source: Marine Department Malaysia No. 52/2014.


Chart MAL 515 (Last Correction 89/2014) WGS 84 DATUM

Insert  FI(3)15s29m15M (a) 01° 27'.75N, 104° 27'.12E

Delete  FI(2)10s (a) above

Chart MAL 65 (Last Correction 101/2014) WGS 84 DATUM

Insert  FI(3)15s29m15M (a) 01° 27'.75N, 104° 27'.12E

Delete  FI(2)10s (a) above

104/2014* Malaysia - Perak - Teluk Rubiah - Light Buoy.

Source: National Hydrographic Centre, Royal Malaysian Navy.


Chart MAL 5410 (Last Correction 43/2014) WGS 84 DATUM

Move  VALE No.1
Oc(2+1)G15s3M 04° 08'.88N, 100° 32'.84E
to: 04° 08'.88N, 100° 33'.84E

Chart MAL 5425 (Last Correction 68/2014) WGS 84 DATUM

Move  VALE No.1
Oc(2+1)G15s3M 04° 08'.88N, 100° 32'.84E
to: 04° 08'.88N, 100° 33'.84E

Chart MAL 554 (Last Correction 68/2014) WGS 84 DATUM

Move  No.1 04° 08'.88N, 100° 32'.84E
to: 04° 08'.88N, 100° 33'.84E

105/2014 Malaysia - Pulau Pinang - Pelabuhan Pulau Pinang - Block.

Source: National Hydrographic Centre, Royal Malaysian Navy.

Chart MAL 5529 (Last Correction 191/2012) WGS 84 DATUM

Insert the accompanying block amendment to
Centre on : 05° 25'.30N, 100° 21'.25E

106/2014* Malaysia - Sarawak - Permatang Semarang - Well.

Source: Petronas Carigali Sdn. Bhd. dated 4 Apr 2014.

Chart MAL 6 (Last Correction 93/2014) WGS 84 DATUM

Insert  Well 06° 09'.26N, 114° 25'.89E
06° 11'.20N, 114° 26'.93E

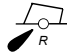
Chart MAL 781 (Last Correction 123/2013) WGS 84 DATUM

Insert  Well 06° 09'.26N, 114° 25'.89E
06° 11'.20N, 114° 26'.93E

107/2014 Malaysia - Johor - Tanjung Belungkor - Light Buoy.

Source: Marine Department Malaysia No. 11/2014.

Chart MAL 6134 (Last Correction 94/2014) WGS 84 DATUM

Delete		<i>Neville Rock</i> <i>Fl(2)R.5s</i>	01° 26'.67N,	104° 02'.62E
Insert		<i>Neville Rock</i> <i>Fl(2)R.5s</i>	01° 26'.67N,	104° 02'.75E

SECTION III

MARINE SAFETY INFORMATION

108/2014(T) Malaysia - Pulau Pinang - Penang - Submarine Cable Laying Operation.

Source: Marine Department Malaysia No. 54/2014(T).

1. THE SUBMARINE CABLE LAYING OPERATION IS BEING CARRIED OUT AT PENANG WATERS, STRAIT OF MALACCA STARTED FROM 08 JUL UNTIL 21 AUG 2014 (46 DAYS). THE COORDINATES ARE AS FOLLOWS:

- A. POINT 1 : 05 33.70N 100 21.49E.
- B. POINT 2 : 05 33.53N 100 19.48E.
- C. POINT 3 : 05 37.04N 100 13.65E.
- D. POINT 4 : 05 38.62N 100 10.60E.

2. THE VESSELS INVOLVED ARE AS FOLLOWS:

- A. MV EXPLORER NUSANTARA
- B. OCEAN WEST
- C. LABROY 156

3. MARINERS ARE ADVISED TO NAVIGATE WITH CAUTION WHEN IN THE VICINITY AND KEEP CLEAR OF THE WORKING AREA.

4. CHARTS AFFECTED : MAL 5, MAL 58, MAL 553, MAL 554, MAL 565 AND MAL 5529.

109/2014(T) Malaysia - Sarawak - Pipe Lay Construction.

Source: Shell Expoloration & Production dated 26 May 2014.

1. THE MEDIUM PIPE LAY CONSTRUCTION IS CURRENTLY BEING CARRIED OUT IN AREA OF LADR-A, BEDP-A, D12DR-A AND D35R-A FIELDS, OFFSHORE SARAWAK STARTED FROM 01 JUL UNTIL 27 AUG. THE COORDINATES ARE AS FOLLOWS:

- A. LADR-A (EXISTING PLATFORM) : 04 38.55N 113 37.23E.
- B. BEDP-A (EXISTING PLATFORM) : 04 36.50N 113 38.56E.
- C. D12DR-A (EXISTING PLATFORM) : 03 51.00N 112 04.48E.
- D. D35R-A (EXISTING PLATFORM) : 03 45.86N 112 03.95E.

2. THE VESSELS INVOLVED ARE AS FOLLOWS :

A. DEEP ORIENT

- 1. TYPE : MEDIUM CONSTRUCTION VESSEL
- 2. FLAG : MALTA
- 3. CALLSIGN : 9HA3082
- 4. LENGTH : 135.65 M
- 5. BREADTH : 27 M
- 6. GRT : 12113

B. IES PIONEER.

- 1. TYPE : DPV
- 2. FLAG : MALAYSIA
- 3. CALLSIGN : 9V9481
- 4. LENGTH : 82.20 M
- 5. BREADTH : 20.40 M
- 6. GRT : 4399

C. TOISA PALADIN.

- 1. TYPE : DIVING SUPPORT VESSEL
- 2. FLAG : UNITED KINGDOM
- 3. CALLSIGN : 2AFQ8

- 4. LENGTH : 103.70 M
- 5. BREADTH : 19.70 M
- 6. GRT : 5648

3. MARINERS ARE ADVISED TO NAVIGATE WITH CAUTION AND KEEP CLEAR WITH 5 NM AWAY FROM THE LOCATIONS WHEN IN THE VICINITY.

4. CHARTS AFFECTED : MAL 6, MAL 740, MAL 741, MAL 750 AND MAL 754.

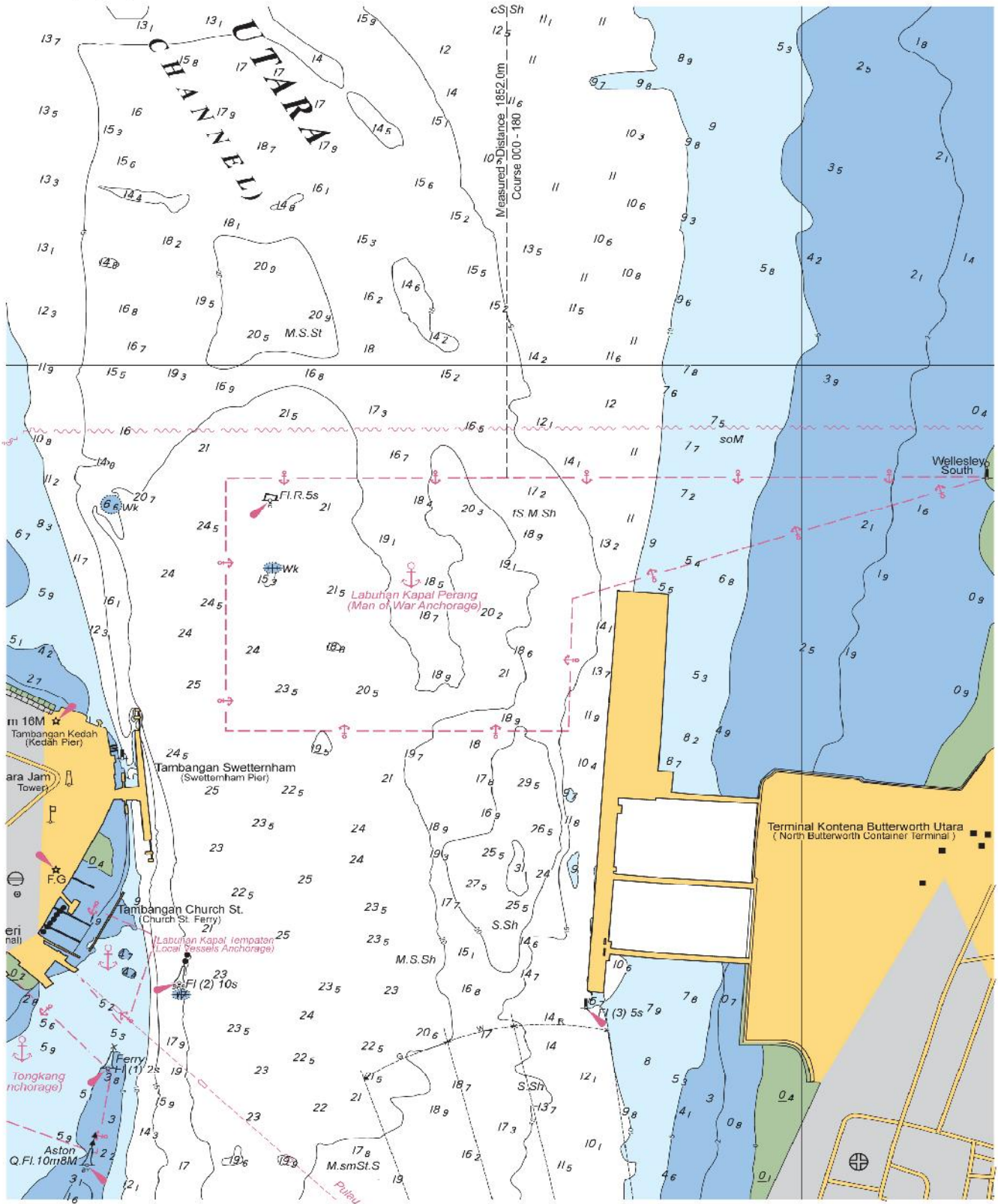
110/2014(T) Malaysia - Sarawak - Petroleum Operating.

Source: Keabangan Petroleum Operating Company Sdn Bhd dated 4 Apr 2014.

1. KEBABANGAN PETROLEUM OPERATING COMPANY (KPOC) SDN. BHD. IS CURRENTLY CARRIED OUT THE HOOK-UP & COMMISSIONING (HUC) OF PLATFORM USING 'SARKU 300', OFFSHORE SABAH AT POSITION 06 26.72N 115 23.46E STARTED FROM 20 JUNE UNTIL 27 DEC 2014.

2. MARINERS ARE ADVISED TO NAVIGATE WITH CAUTION AND KEEP CLEAR WITH 5 NM AWAY FROM THE LOCATION WHEN IN THE VICINITY.

3. CHARTS AFFECTED : MAL 6, MAL 864, MAL 865 AND MAL 872.



Block for Chart MAL 5529

SECTION IV

CORRECTIONS TO MALAYSIAN LIST OF LIGHTS

-NIL-